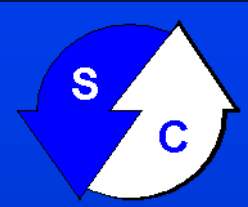


# PORTAL SOFTCOM-ADM passenger transportation





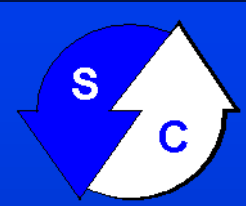
# Project purpose

Creation of automated control system of transport, which will improve the quality of passenger service, safety and city image

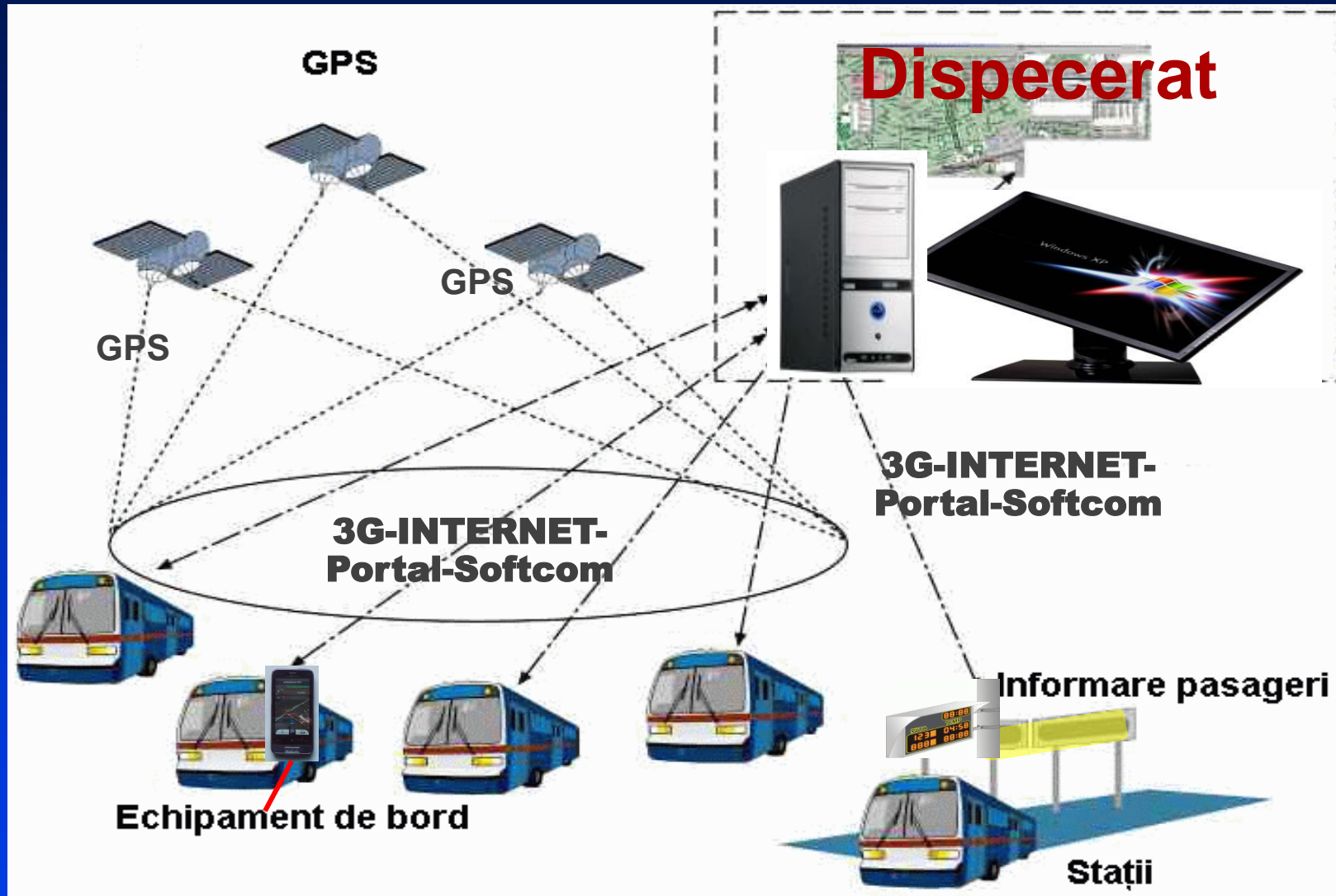


# Main functions

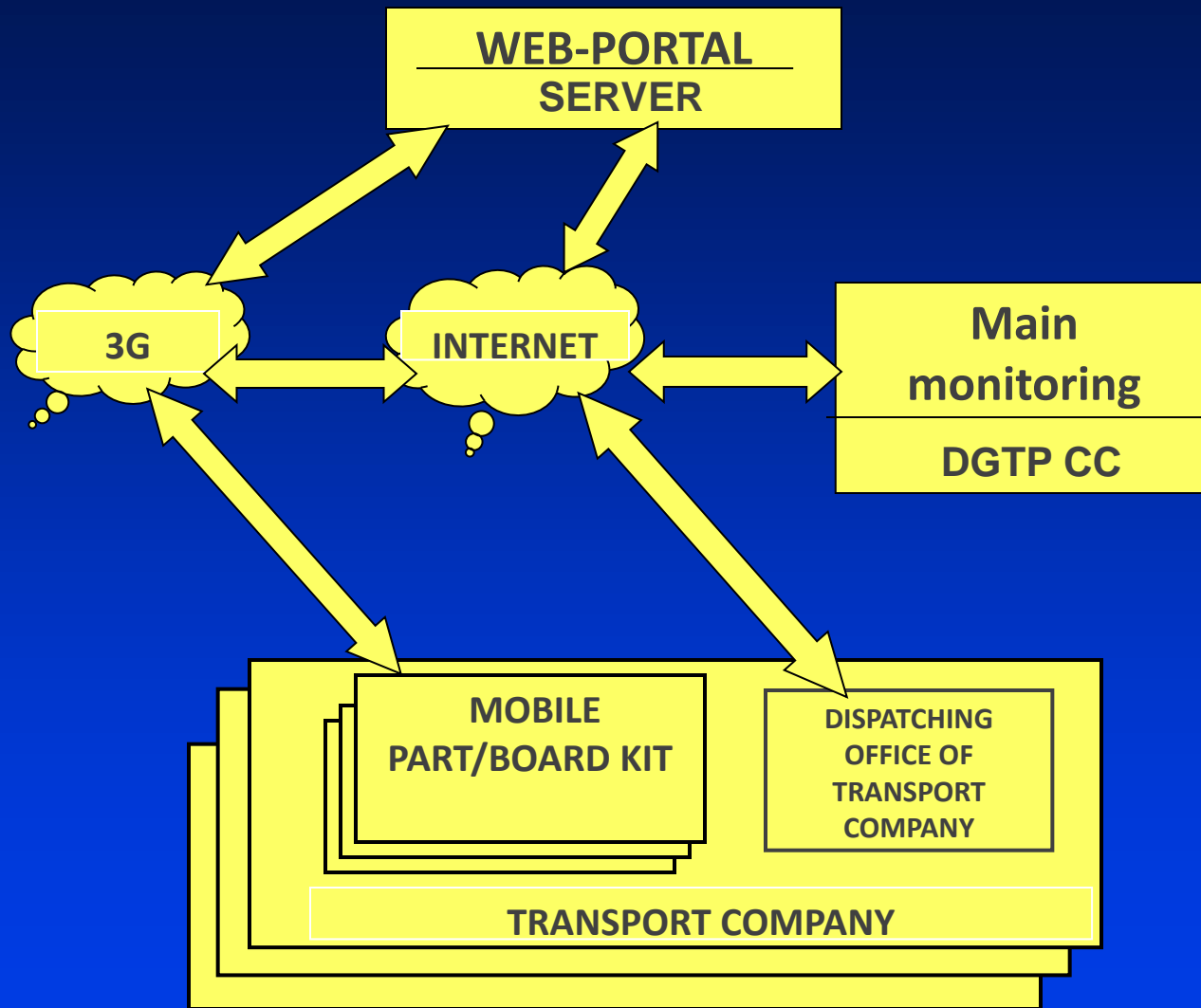
- Automatic detection of vehicle geoposition, based on satellite navigation;
- Data transmission and voice communications between vehicles and dispatch center (on the GSM-Internet);
- Cartographic (GIS) interactive visualization of vehicles movement;
- Operational response to alarm reports;
- Operative indication on bus stop display the arrival time of vehicle;
- Monitoring of the passenger traffic.



# Main Architecture



# Arhitectura administrare







# Dispatching office.

## Geoinformation support (1)

Comandă nouă

Mesaj standard

Start DEMO

Selectare taxi

Confirmare comandă

disp2

Back

Exit

Карта

Спутник

Гибрид

822

823

824

825

826

827

828

846

2

3

4

5

6

7

8

BORD Nr 826 Șofer 5

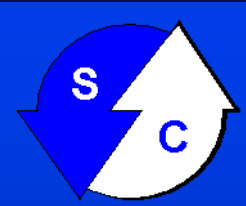
[TELEFON](#)

[NAVIGATOR](#)

[TRACK](#)

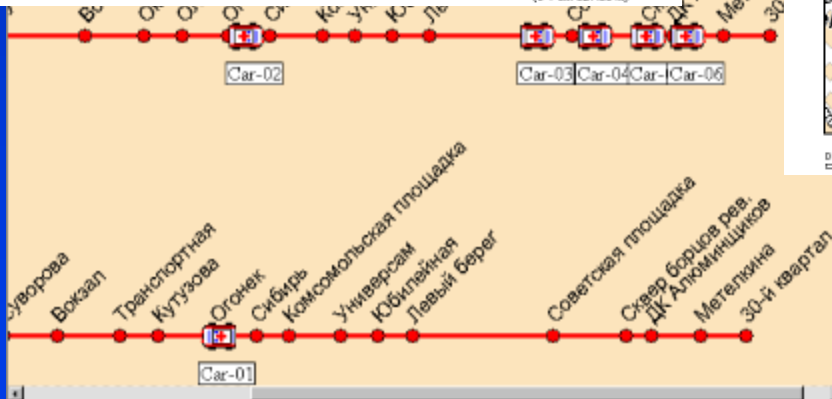
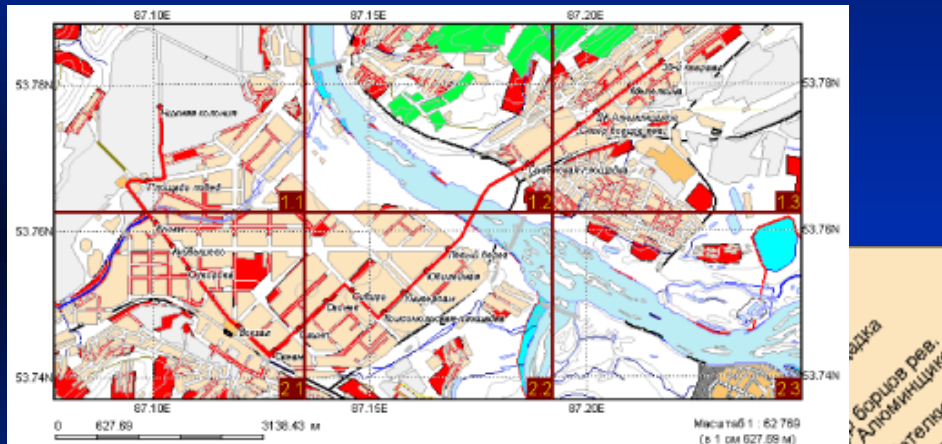
[TEXT](#)

COMANDA Nr 5



# Dispatching office.

## Geoinformation support (2)

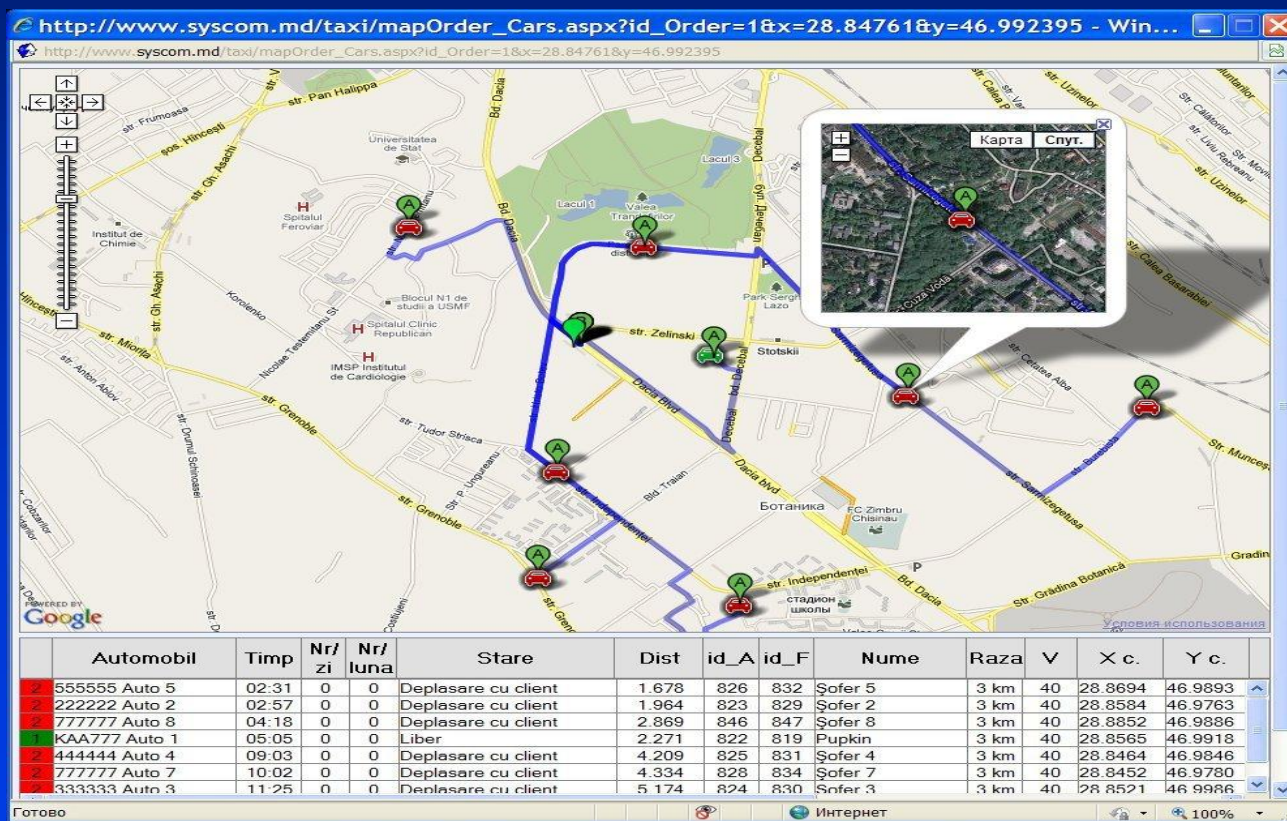






# Dispatching office.

## Geoinformation support (3)







# Reports

OrdersForm

| №    | Начало              | Окончание           | Доход, лей | Физ. лицо | Юр. лицо | Срочный | Предварительный | Водитель           | Оператор    | Диспетчер   | T (Оператор) | T (Поиск Ав... | T (Подача А... | T (Дк... |
|------|---------------------|---------------------|------------|-----------|----------|---------|-----------------|--------------------|-------------|-------------|--------------|----------------|----------------|----------|
| 3982 | 08.12.2009 14:28:49 | 08.12.2009 14:58:48 | 50         | 1         | 0        | 1       | 0               | LastName2 First... | LastName... | LastName... | 00:03:38     | 00:02:56       | 00:08:14       | 00:16    |
| 3983 | 08.12.2009 14:39:13 | 08.12.2009 15:09:29 | 15         | 0         | 1        | 1       | 0               | LastName5 First... | LastName... | LastName... | 00:03:16     | 00:04:50       | 00:07:10       | 00:15    |
| 3984 | 08.12.2009 14:51:40 | 08.12.2009 15:20:36 | 40         | 0         | 1        | 1       | 0               | LastName4 First... | LastName... | LastName... | 00:02:55     | 00:01:00       | 00:08:59       | 00:16    |
| 3985 | 08.12.2009 15:00:40 | 08.12.2009 15:29:00 | 30         | 1         | 0        | 0       | 1               | LastName1 First... | LastName... | LastName... | 00:04:26     | 00:02:53       | 00:07:56       | 00:13    |
| 3986 | 08.12.2009 15:10:03 | 08.12.2009 15:38:09 | 20         | 0         | 1        | 0       | 1               | LastName4 First... | LastName... | LastName... | 00:04:07     | 00:02:12       | 00:07:36       | 00:14    |
| 3987 | 08.12.2009 15:20:27 | 08.12.2009 15:47:03 | 20         | 0         | 1        | 1       | 0               | LastName2 First... | LastName... | LastName... | 00:04:11     | 00:01:00       | 00:06:14       | 00:15    |
| 3988 | 08.12.2009 15:29:32 | 08.12.2009 16:00:32 | 25         | 1         | 0        | 1       | 0               | LastName2 First... | LastName... | LastName... | 00:04:16     | 00:01:23       | 00:08:17       | 00:17    |
| 3989 | 08.12.2009 15:38:12 | 08.12.2009 16:08:49 | 25         | 0         | 1        | 1       | 0               | LastName4 First... | LastName... | LastName... | 00:04:32     | 00:02:52       | 00:07:47       | 00:15    |
| 3990 | 08.12.2009 15:48:21 | 08.12.2009 16:16:50 | 20         | 0         | 1        | 1       | 0               | LastName4 First... | LastName... | LastName... | 00:04:01     | 00:00:42       | 00:06:55       | 00:16    |
| 3991 | 08.12.2009 15:58:24 | 08.12.2009 16:24:26 | 35         | 1         | 0        | 0       | 1               | LastName4 First... | LastName... | LastName... | 00:02:02     | 00:02:55       | 00:07:12       | 00:13    |
| 3992 | 08.12.2009 16:09:05 | 08.12.2009 16:39:48 | 35         | 0         | 1        | 0       | 1               |                    |             |             |              |                |                |          |
| 3993 | 08.12.2009 16:20:11 | 08.12.2009 16:47:22 | 25         | 0         | 1        | 0       | 1               |                    |             |             |              |                |                |          |
| 3994 | 08.12.2009 16:31:36 | 08.12.2009 17:01:57 | 20         | 0         | 1        | 0       | 1               |                    |             |             |              |                |                |          |
| 3995 | 08.12.2009 16:40:45 | 08.12.2009 17:10:11 | 15         | 1         | 0        | 0       | 1               |                    |             |             |              |                |                |          |
| 3996 | 08.12.2009 16:51:45 | 08.12.2009 17:22:37 | 30         | 1         | 0        | 0       | 1               |                    |             |             |              |                |                |          |
| 3997 | 08.12.2009 17:00:47 | 08.12.2009 17:30:55 | 25         | 0         | 1        | 0       | 1               |                    |             |             |              |                |                |          |
| 3998 | 08.12.2009 17:10:32 | 08.12.2009 17:36:35 | 25         | 0         | 1        | 0       | 1               |                    |             |             |              |                |                |          |
| 3999 | 08.12.2009 17:21:49 | 08.12.2009 17:48:53 | 25         | 1         | 0        | 0       | 1               |                    |             |             |              |                |                |          |
| 4000 | 08.12.2009 17:31:30 | 08.12.2009 18:01:17 | 30         | 0         | 1        | 0       | 1               |                    |             |             |              |                |                |          |
| 4001 | 08.12.2009 17:41:30 | 08.12.2009 18:09:13 | 30         | 1         | 0        | 0       | 1               |                    |             |             |              |                |                |          |
| 4002 | 08.12.2009 17:51:52 | 08.12.2009 18:22:17 | 25         | 0         | 1        | 0       | 1               |                    |             |             |              |                |                |          |
| 4003 | 08.12.2009 18:03:29 | 08.12.2009 18:31:58 | 20         | 0         | 1        | 0       | 1               |                    |             |             |              |                |                |          |
| 4004 | 08.12.2009 18:15:09 | 08.12.2009 18:48:07 | 25         | 1         | 0        | 0       | 1               |                    |             |             |              |                |                |          |

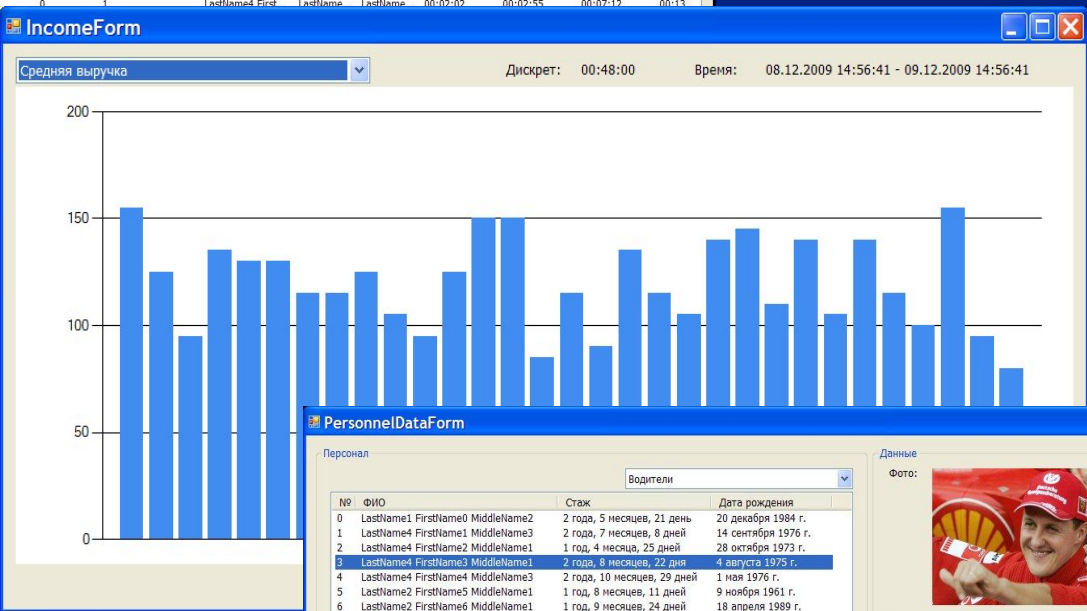
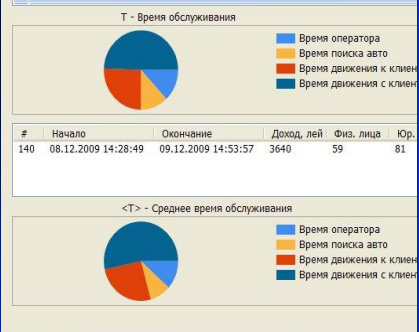
IncomeForm

Средняя выручка

Дискрет: 00:48:00

Вре

200



| PersonnelDataForm |                                  |                             |                     |
|-------------------|----------------------------------|-----------------------------|---------------------|
| Персонал          |                                  |                             |                     |
| Водители          |                                  |                             |                     |
| №                 | ФИО                              | Стаж                        | Дата рождения       |
| 0                 | LastName1 FirstName0 MiddleName2 | 2 года, 5 месяцев, 21 день  | 20 декабря 1984 г.  |
| 1                 | LastName4 FirstName1 MiddleName3 | 2 года, 7 месяцев, 8 дней   | 14 сентября 1976 г. |
| 2                 | LastName4 FirstName2 MiddleName1 | 1 год, 4 месяца, 25 дней    | 28 октября 1973 г.  |
| 3                 | LastName4 FirstName3 MiddleName1 | 2 года, 8 месяцев, 22 дня   | 4 августа 1975 г.   |
| 4                 | LastName4 FirstName4 MiddleName3 | 2 года, 10 месяцев, 29 дней | 1 мая 1976 г.       |
| 5                 | LastName2 FirstName5 MiddleName1 | 1 год, 8 месяцев, 11 дней   | 9 ноября 1961 г.    |
| 6                 | LastName2 FirstName6 MiddleName1 | 1 год, 9 месяцев, 24 дней   | 18 апреля 1989 г.   |
| 7                 | LastName2 FirstName7 MiddleName1 | 1 год, 10 месяцев, 29 дней  | 3 августа 1963 г.   |
| 8                 | LastName5 FirstName8 MiddleName2 | 1 год, 6 месяцев, 20 дней   | 11 марта 1978 г.    |
| 9                 | LastName3 FirstName9 MiddleName1 | 3 года, 1 месяц, 2 дня      | 29 декабря 1978 г.  |

Данные

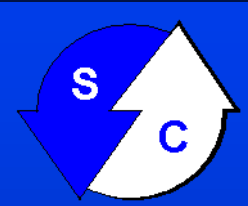
Фото:

| Параметр                | Значение                  |
|-------------------------|---------------------------|
| Личные данные           |                           |
| Фамилия                 | LastName4                 |
| Имя                     | FirstName3                |
| Отчество                | MiddleName1               |
| Дата рождения           | 4 августа 1975 г.         |
| Возраст                 | 35                        |
| Данные по работе        |                           |
| Дата принятия на работу | 19 апреля 2008 г.         |
| Стаж работы             | 2 года, 8 месяцев, 22 дня |



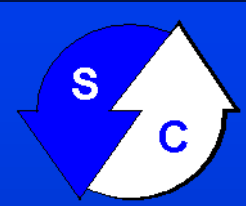
# The onboard kit (1)





# The onboard kit (2)

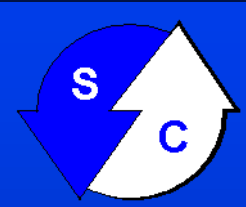




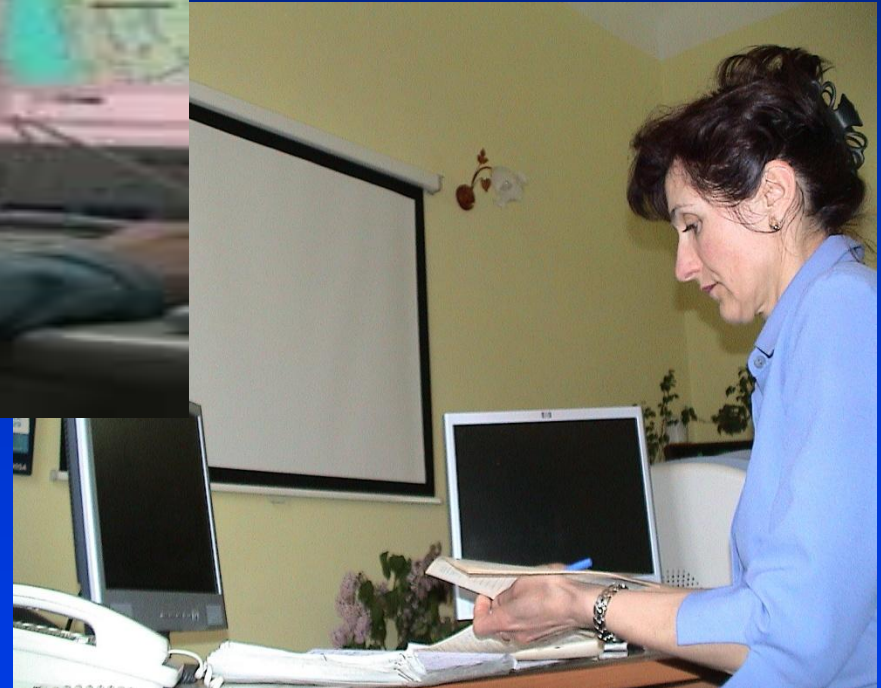
# Bus stop display

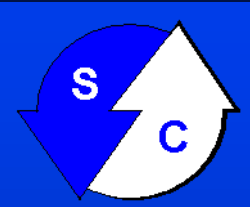






# Dispatching office





# Advantages (1)

## Passengers and drivers

### *At bus stops:*

- Operative informing passengers at bus stops display of the arrival time of vehicles
- Waiting time reduction
- Useful announcements (time, weather, route change etc.) and advertisement



# Advantages (2)

## *On vehicle board:*

- Operative voice information
- Useful announcements and advertisement
- Statistics on the number of passengers
- Increase of comfort and safety of drivers



# Advantages (3)

## Transport enterprise

- **Monitoring and automatic control of movement traffic**
- **Increase in reactivity to alarm events (accident, unforeseen delay, technical failure etc.)**
- **Improved quality of service, comfort of the dispatchers and drivers**
- **Certification of services for quality system (ISO 9000)**





# Advantages(4)

## Public Transport Directorate General

- Fully effective monitoring traffic flow and quality of city transportation (Dispatch);
- Monitoring the number of passengers and passenger trades in the city;
- Effective planning of public transport in the city;
- Raising the quality of passenger service and image of the capital.